



ARAPOHUE SCHOOL

Te ara ki mātauranga • The pathway to knowledge

Newsletter #8 2025 – Term 2 Week 9

FROM KYLIE'S DESK

Kia ora koutou katoa,

What a rush this term has been – nine weeks, with a few public holidays thrown in, definitely made things speed by!

It was great to see so many of you join us for our **early morning Hautapu Learning Celebration** last week. While the cloud cover meant we couldn't see many stars, it was still lovely to gather together and welcome in the Māori New Year. A huge thanks to our amazing teaching team who then ran some great programs for some tired learners for the remainder of that day!

The following day, we enjoyed a fantastic time at **Dargaville Intermediate for the Matariki Kapa Haka Festival**. I was so proud of our Year 6, 7, and 8 students who joined for the whole day, conducting themselves wonderfully and displaying all of our **PATH values**. When



the rest of the school joined us, we took our stand on stage with immense pride. Every single student on that stage shone and was an absolute delight to see. A special thanks to Mac, who played guitar for us, and to Eden, who has been working with our students for the last month or so, generously sharing her knowledge and skills with us.

While these exciting events have been taking place, teachers have also been busy completing testing, assessments, and reports for all students. The opportunity to stop and **reflect on each individual's progress** is always positive, and I know teachers will be keen to meet with you on Wednesday of Week One next term to discuss your child's progress. Please return the booking form **TOMORROW** to secure your time. Also included is another attendance update. We are aware this is the third 'format' we have shared this info with you, we ask for your patience as we find a format that is clear and easy to understand and is fast and efficient for us to produce! We think we have a winner this time and would love your feedback.



Finally, we look forward to our last day of the term tomorrow – our **Muffi Day Fundraiser!** We're supporting the amazing local crew from **Dargaville Little Theatre (including a new parent to our school – Lorraine Ripikoi)**, who are heading to Monaco next term to represent NZ. We hope that finding something for your child to wear has been a fun, creative opportunity – I look forward to seeing what they come up with!

Mauriora,
Kylie

NEWS FROM THE BOARD

Board elections are coming up next term – if you are interested in standing for the board or would like to know more about what this entails talk to one of our existing members.

We are excited that we should (hopefully) have the installation of some basketball hoops started at school this week. We are grateful to Basketball Northland for their support with this and for funds received from Sport Northland / Tu Manawa funding.

GRATITUDE

Big thanks to the Clements Family for the donation of 2 bull calves/yearlings which are heading to the bull farm and proceeds to our school. If any of our farming families are interested in doing this for the upcoming season please let us know.

ATTENDANCE

Attendance updates come out today with your child's report. We appreciate the amount of sickness that has been surrounding us in recent weeks and thank you for keeping your child home to avoid sharing these nasty bugs. Just a reminder that medical absences are justified.

AG DAY 2025

As we approach the calving/lambing season, a reminder for anyone wanting to rear a calf/lamb/goat for this years' Ag Day, the animals must be born between 1 July – 15 September.

UPDATING CONTACT DETAILS

Since enrolling your child at Arapohue School, have any of your contact details or their medical details changed that you may not have updated us with? If yes, please let us know in the office or use the 'Update Contact Details' button at the bottom of our website homepage so we can keep all information current.

ASSEMBLY

Tomorrow our assembly will be run by Māhuri (the short 9 week term has meant we are out of sync with the newsletter) – check out our facebook page tomorrow if you are keen to see who wins the classroom awards and PATH card draw.

PAPER BAGS

If anyone has surplus paper shopping bags we have many uses for them and would be grateful to receive any you may have available.

SCHOOL DOCS

Don't forget to log on to Schooldocs to complete this terms reviews:

<https://arapohue.schooldocs.co.nz/>

User name: arapohue PW: path

Only a couple of days before these reviews close.

BUS/PICKUP CHANGES

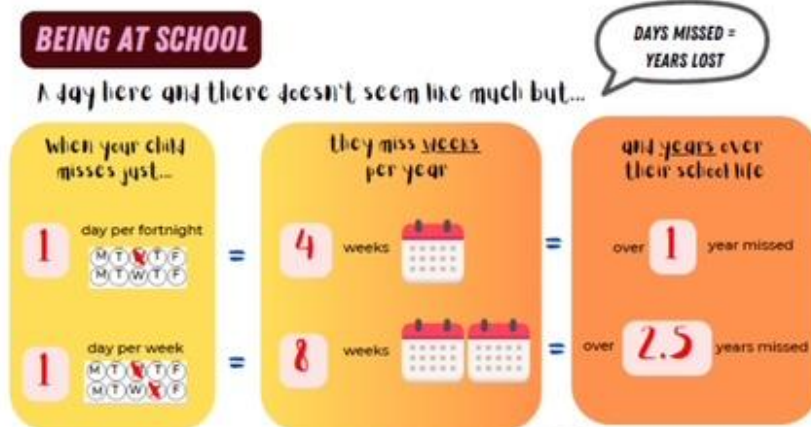
Please ensure any changes to afternoon bus/pickup routines are phoned (4397513), texted (02108826534), or emailed (rochelle@arapohue.school.nz) to the office prior to 1pm. The office is unmanned after that time and our other staff are in class teaching. While we do our best to accommodate, we cannot guarantee last minute messages are cleared in time.

2025 Some Dates to Remember

Thursday	26 June	Reports/Newsletter/Attendance updates Home Seniors last day of technology
Friday	27 June	Last Day Term 2 – DRESS UP MUFTI FUNDRAISER -
Monday	14 July	First Day Term 3
Wednesday	16 July	Parent Interviews -starting at 2pm. School will finish as normal at 2:30pm.
Wednesday	30 July	Kāhui Ako Mathex: Year 5 – 8
Thursday	14 August	Northland Mathex
Thursday	28 August	Rob Cope KIDS ONLINE presentation – this is a MUST SEE if you have kids on devices in your home!
Wednesday	10 Sept	Board Elections
Friday	12 Sept	Yr 7/8 Book Challenge
Wednesday	17 Sept	Learning Celebration
Friday	19 Sept	Last day of term 3



Attendance Matters!



BEING AT HOME

STAY HOME TO STOP THE SPREAD OF GERMS

When am I too sick to come to school?

- You have a fever
- You're sniffling, coughing and have a scratchy throat with no fever
- You have green or yellow nasal discharge
- You have a killer headache
- You have a hacking cough
- You have vomited or had diarrhea in the last 48hrs

PARENT TEACHER INTERVIEW FORM – Wednesday 16th JULY

Please indicate your interview requirements here and return this form to school. Confirmed times to be advised following collation of requests. **Please note Rākau appointments only available from 2:45**

Student Name _____	Student Name _____
2:00 3:00 4:00 5:00 6:00	2:00 3:00 4:00 5:00 6:00
2:15 3:15 4:15 5:15	2:15 3:15 4:15 5:15
2:30 3:30 4:30 5:30	2:30 3:30 4:30 5:30
2:45 3:45 4:45 5:45	2:45 3:45 4:45 5:45
Student Name _____	Student Name _____
2:00 3:00 4:00 5:00 6:00	2:00 3:00 4:00 5:00 6:00
2:15 3:15 4:15 5:15	2:15 3:15 4:15 5:15
2:30 3:30 4:30 5:30	2:30 3:30 4:30 5:30
2:45 3:45 4:45 5:45	2:45 3:45 4:45 5:45

Parent/Guardian Name: _____